

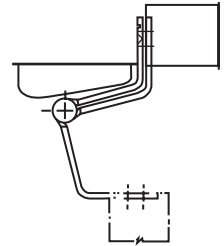
### 3 KNUCKLE SWING CLEAR HINGES

#### Standard Weight Plain Bearing “Swing Clear” Full Mortise



**1947R** – (ANSI A8123) Steel – polished and plated or phosphated and prime coated for painting

- Equipped with easily seated non-rising pins
- Reversible flush tips and pins
- Ideal for remodeling or new construction
- Available for full mortise application on square edge doors only
- Designed to replace existing 3 1/2" (89mm) or 4" (102mm) hinges for Swing Clear openings (some preparation modification typically required for residential use)
- Designed to swing doors completely clear of the opening when door is opened 95°



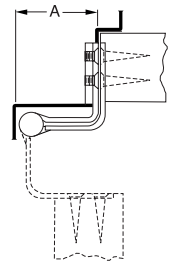
| Class Number | Size Length of Joint |       | Gauge of Metal |       | Flat Head Wood Screws/ Per Piece | Quantity Per Box | Quantity Per Case | Case Weight |      |
|--------------|----------------------|-------|----------------|-------|----------------------------------|------------------|-------------------|-------------|------|
|              | Inches               | (mm)  | Inches         | (mm)  |                                  |                  |                   | Lbs.        | (Kg) |
| <b>1947R</b> | 3 1/2                | (89)  | .123           | (3.1) | 6-10 X 1                         | 2 EA.            | 20 EA.            | 16          | (7)  |
|              | 4                    | (102) | .130           | (3.3) | 8-12 X 1 1/4                     | 2 EA.            | 20 EA.            | 24          | (11) |

#### Standard Weight Concealed Bearing “Swing Clear” Full Mortise



**CB1946R** – (ANSI A8122) } Steel – polished and plated or phosphated and prime coated for painting  
**CB1947R** – (ANSI A8122) }

- Reversible flush tips and pins
- Ideal for remodeling or new construction
- Specify CB1947R for full mortise application on square edge doors
- Specify CB1946R for full mortise application on bevel edge doors
- Designed to swing doors completely clear of the opening when door is opened 90°
- Concealed LifeSpan® bearing for trouble-free, long life – no oil, no grease, no maintenance
- Hinges can be furnished with hospital tips (HT)
- LifeSpan® limited lifetime warranty
- Available with exposed tips (ET)



**CB1947R (Shown)**  
 {For square edge doors}

**CB1946R**  
 {For doors beveled 1/8" in 2" (3.2 in 51mm)}

| Class Number | Size Length of Joint |       | Minimum Clearance Required Dimensions "A" |      | Gauge of Metal |       | Flat Head Screws/ Per Piece |                | Quantity Per Box | Quantity Per Case | Case Weight |      |
|--------------|----------------------|-------|-------------------------------------------|------|----------------|-------|-----------------------------|----------------|------------------|-------------------|-------------|------|
|              | Inches               | (mm)  | Inches                                    | (mm) | Inches         | (mm)  | Frame Leaf-Machine          | Door Leaf-Wood |                  |                   | Lbs.        | (Kg) |
| <b>1946R</b> | 4 1/2                | (114) | 2 1/8                                     | (54) | .134           | (3.4) | 4-12-24 X 1/2               | 4-12 X 1 1/4   | 3 EA.            | 24 EA.            | 36          | (17) |
| <b>1947R</b> | 4 1/2                | (114) | 2 1/8                                     | (54) | .134           | (3.4) | 4-12-24 X 1/2               | 4-12 X 1 1/4   | 3 EA.            | 24 EA.            | 36          | (17) |

\* Consult factory on availability of stainless steel