

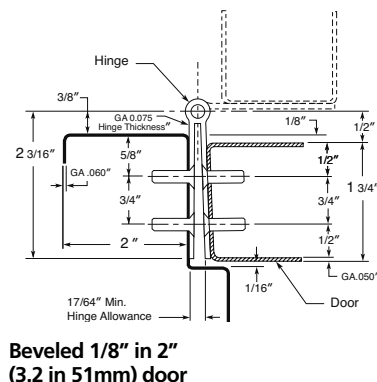
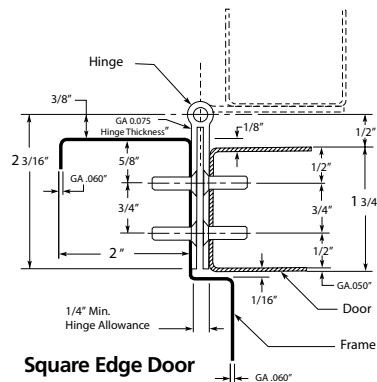
## Architectural Steel And Stainless Steel Barrel Type Continuous Hinges Full Mortise

**641** – (ANSI A81011B & A81021B) – Standard duty, steel for 1/8" inset doors

**651** – (ANSI A51011B & A51021B) – Standard duty, stainless steel for 1/8" inset doors



- BHMA certified
- Conforms to ANSI/BHMA Standard A156.26–2006, Grade 1-300
- Supports doors up to 600 lbs.
- Distributes door weight and stress along the full length of door and frame
- No misaligned pivot points of individual hinges
- Hinge covered by a limited lifetime warranty for the life of the building
- Fire rated for up to and including 3 hours
- Leaves attached to the edge of door and frame, revealing only the slim hinge bevel when door is closed
- Steel hinges supplied prime coated for painting. For other powder coated finishes consult factory
- Stainless steel is available in (32) highly polished, and (32D) satin finish. Consult the factory for black, white and custom powder coated finishes.
- 1/4" diameter teflon coated pins
- Superior bearing design inhibits dirt collection
- Two stainless steel bearings, top and bottom, prevent door sagging if Nylatron bearings degrade during a fire
- Hinges can be furnished as follows:
  - narrow (sheared) leaves for 1 3/8" thick doors
  - with hospital tips (HT)
  - with dutch door prep
  - with electric wires (CE)
  - with electric switches (CS)
  - with electric power transfer (EPT) prep – Specify manufacturer and model number of transfer
  - with raised barrel (RB)
  - custom length
  - with welded pin



Length		Finish		Number of #10 x 1/2" Self Drilling Screws Per Hinge	Number of #10 x 1" Wood Screws Per Hinge	Quantity Per Carton	Carton Weight	
Feet	(mm)	641	651				Lbs.	(Kg)
6' 8"	(2032)	P	32D	40	20	1	14	(6.4)
7' 0"	(2134)	P	32D	42	21	1	14	(6.4)
7' 2"	(2184)	P	32D	42	21	1	14	(6.4)
8' 0"	(2286)	P	32D	46	23	1	16	(7.3)
10' 0"	(3048)	P	32D	54	27	1	20	(9.1)

Machine screws available separately

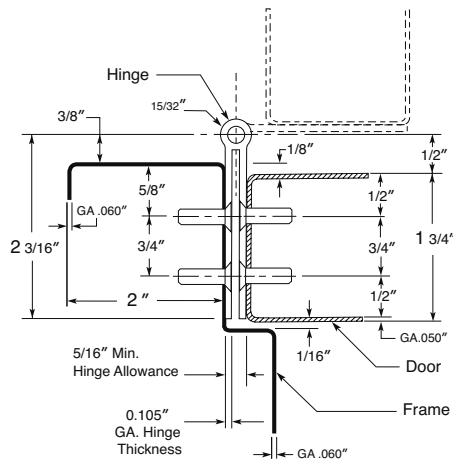
# Architectural Steel And Stainless Steel Barrel Type Continuous Hinges

## Full Mortise

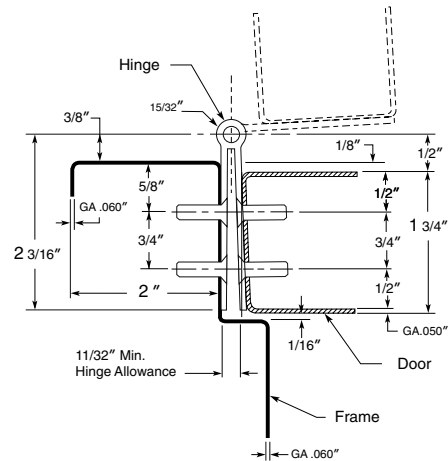
651HD – (ANSI A51011B & A51021B) – Heavy duty 12 gauge stainless steel for 1/8" inset doors.



- Suitable for healthcare and correctional facilities where high use and/or abuse is expected
- Supports doors up to 900 lbs. 4' maximum door width
- BHMA certified
- Conforms to ANSI/BHMA Standard A156.26–2006, Grade 1-300
- Distributes door weight and stress along the full length of door and frame
- No misaligned pivot points of individual hinges
- Hinge covered by a limited lifetime warranty for the life of the building
- Fire rated for up to and including 3 hours
- Leaves attached to the edge of door and frame, revealing only the slim hinge bevel when door is closed
- Stainless steel is available in (32) highly polished, and (32D) satin finish. Consult the factory for black, white and custom powder coated finishes.
- 1/4" diameter teflon coated pins
- Superior bearing design inhibits dirt collection
- Two stainless steel bearings, top and bottom, prevent door sagging if Nylatron bearings degrade during a fire
- Hinges can be furnished as follows:
  - with hospital tips (HT)
  - with dutch door prep
  - with electric wires (CE) – Specify CE600 current transfer with SHCE600HD shims along with hinge model
  - with electric power transfer (EPT) prep – Specify manufacturer and model number of transfer
  - with raised barrel (RB)
  - custom length
  - with welded pin



**Square Edge Door**



**Beveled 1/8" in 2" (3.2 in 51mm) door**

Length	Finish	Number of #10 x 1/2" Self Drilling Screws Per Hinge	Number of #10 x 1" Wood Screws Per Hinge	Quantity Per Carton	Carton Weight	
					Lbs.	(Kg)
6' 8" (2032)	P 32D	40	20	1	17	(7.7)
7' 0" (2134)	P 32D	42	21	1	17	(7.7)
7' 2" (2184)	P 32D	42	21	1	17	(7.7)
8' 0" (2286)	P 32D	46	23	1	19	(8.6)
10' 0" (3048)	P 32D	54	27	1	24	(10.9)

Machine screws available separately