

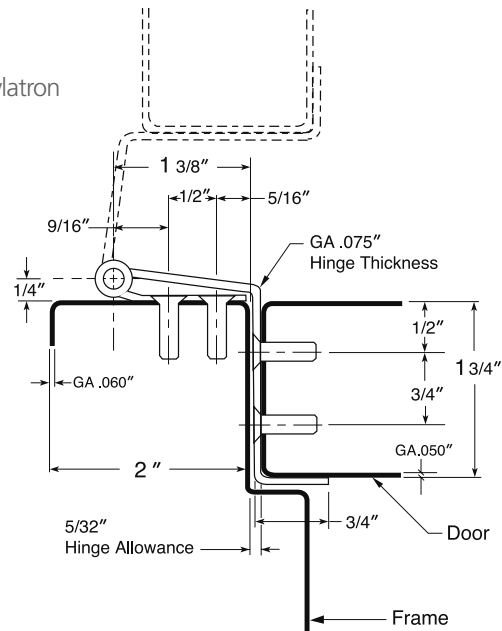
Architectural Steel And Stainless Steel Barrel Type Continuous Hinges Half Mortise Swing Clear with Half-Wrap Edge Guard

646 – (ANSI A85011B & A85022B) – Standard duty steel

656 – (ANSI A55011B & A55022B) – Standard duty stainless steel



- BHMA certified
- Conforms to ANSI/BHMA Standard A156.26–2006, Grade 1-300
- Supports doors up to 600 lbs.
- To meet ADA requirements for barrier-free clearance in a 32" opening, the pivot point of the hinge is located on the face of the frame, allowing the door to swing out of the opening to provide clear passage by wheel chairs and other equipment
- Distributes door weight and stress along the full length of door and frame
- No misaligned pivot points of individual hinges
- Edge guard protects the inside edge of door, which is most exposed to damage when open
- Fire rated for up to and including 3 hours
- Hinge covered by a limited lifetime warranty for the life of the building
- Steel hinges are prime coated for painting. For other powder coated finishes consult factory
- Stainless steel is available in (32) highly polished, and (32D) satin finish. Consult the factory for black, white and custom powder coated finishes.
- 1/4" diameter teflon coated pin
- Superior bearing design inhibits dirt collection
- Two stainless steel bearings, top and bottom, prevent door sagging if Nylatron bearings degrade during a fire
- Hinges can be furnished as follows:
 - with hospital tips (HT)
 - with dutch door prep
 - custom length



Length	Finish	Number of #10 x 1/2" Self Drilling Screws Per Hinge		Number of #10 x 1" Wood Screws Per Hinge	Quantity Per Carton	Carton Weight	
		646	656			Lbs.	(Kg)
6' 8"	(2032)	P	32D	40	20	1	17 (7.7)
7' 0"	(2134)	P	32D	42	21	1	17 (7.7)
7' 2"	(2184)	P	32D	42	21	1	17 (7.7)
8' 0"	(2286)	P	32D	46	23	1	20 (9.1)
10' 0"	(3048)	P	32D	54	27	1	26 (11.8)

Machine screws available separately