

**ARCHITECTURAL STEEL AND STAINLESS STEEL BARREL TYPE CONTINUOUS HINGES**

**Half Mortise with Half-Wrap Edge Guard** *LifeSpan*<sup>®</sup>

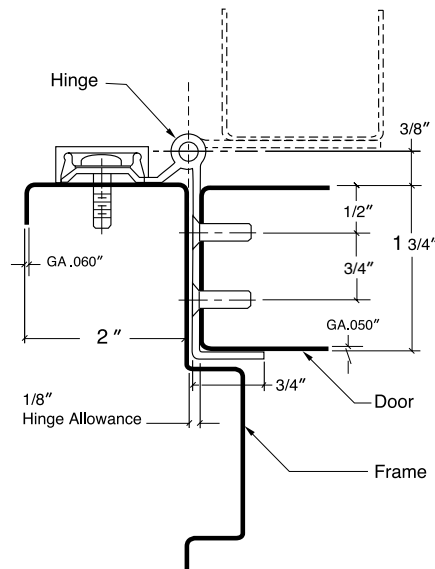
- 645** – Standard duty steel
- 655** – Standard duty stainless steel

- Distributes door weight and stress along the full length of door and frame
- No misaligned pivot points of individual hinges
- Conforms to ANSI/BHMA Standard A156.26-1996, Grade 1
- Ideal for retrofit applications
- Edge guard protects the inside edge of door, which is most exposed to damage when open
- Fire rated for up to and including 3 hours
- LifeSpan<sup>®</sup> hinge covered by a limited lifetime warranty for the life of the building
- Steel hinges are prime coated for painting. For other powder coated finishes consult factory
- Stainless steel is available in (32) highly polished, and (32D) satin finish. For special powder coated finishes consult factory
- 1/4" diameter teflon coated pin
- 6' 8", 7' and 7' 2" use 6 screw cover clips. 8' uses 8 screw cover clips. 10' 0" uses 9 screw cover clips.
- Superior bearing design inhibits dirt collection
- Two stainless steel bearings, top and bottom, prevent door sagging if nylon bearings degrade during a fire

Hinges can be furnished as follows:

- with hospital tips (HT)
- with dutch door prep
- custom length

Replacement covers available separately



Length		Finish		Number of 1/4 - 20 X 3/4" Self Drilling Screws Per Hinge	Number of #10 x 1/2" Self Drilling Screws Per Hinge	Number of #10 x 1" Wood Screws Per Hinge	Quantity Per Carton	Carton Weight	
Feet	(mm)	645	655					Lbs.	(KG)
6' 8"	(2032)	P	32D	13	20	20	1	16	(7.3)
7' 0"	(2134)	P	32D	13	21	21	1	16	(7.3)
7' 2"	(2184)	P	32D	13	21	21	1	16	(7.3)
8' 0"	(2286)	P	32D	14	23	23	1	18	(8.2)
10' 0"	(3048)	P	32D	17	27	27	1	22	(10)

Machine screws available separately