

ARCHITECTURAL STEEL AND STAINLESS STEEL BARREL TYPE CONTINUOUS HINGES

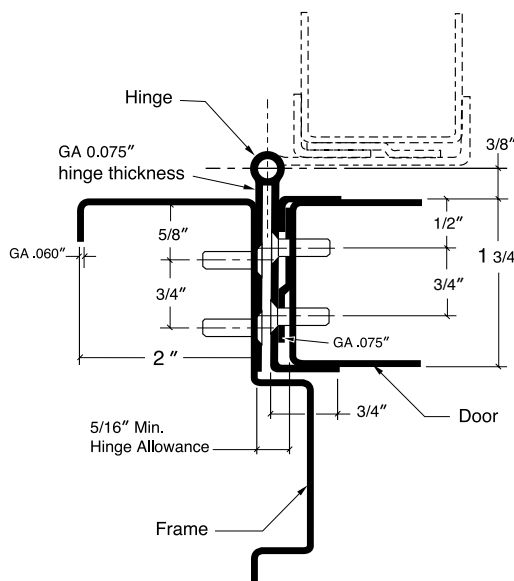
Full Mortise with Adjustable Full-Wrap Edge Guard **LifeSpan**

652 – Standard duty, stainless steel with adjusta-screws

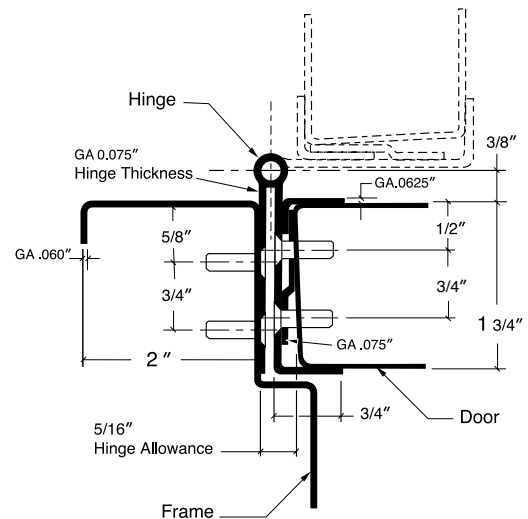
- Distributes door weight and stress along the full length of door and frame
- No misaligned pivot points of individual hinges
- Conforms to ANSI/BHMA Standard A156.26-1996, Grade 1
- Full wrap edge guard protects the inside and outside hinge edge of the door and adjusts to various door thicknesses from 1 5/8" to 1 3/4"
- Adjusta-screws have a 3/8" range for correcting fit
- Available finishes are (32) highly polished, and (32D) satin. For special powder coated finishes consult factory
- 1/4" diameter teflon coated pin
- Fire rated for up to and including 3-hours
- LifeSpan® hinge covered by a limited lifetime warranty for the life of the building
- Superior bearing design inhibits dirt collection
- Two stainless steel bearings, top and bottom, prevent door sagging if nylon bearings degrade during a fire

Hinges can be furnished as follows:

- with hospital tips (HT)
- with dutch door prep
- custom length



Square Edge Door



Beveled 1/8" in 2" (3.2 in 51mm) door

Length		Finish	Number of #10 x 1/2" Self Drilling Screws Per Hinge	Number of #10 x 1" Wood Screws Per Hinge	Quantity Per Carton	Carton Weight	
Feet	(mm)					Lbs.	(KG)
6' 8"	(2032)	32D	40	20	1	18	(8.2)
7' 0"	(2134)	32D	42	21	1	18	(8.2)
7' 2"	(2184)	32D	42	21	1	18	(8.2)
8' 0"	(2286)	32D	46	23	1	21	(9.5)
10' 0"	(3048)	32D	54	27	1	27	(12.2)

Machine screws available separately