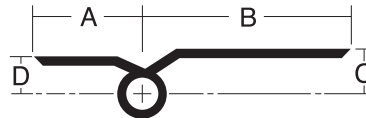
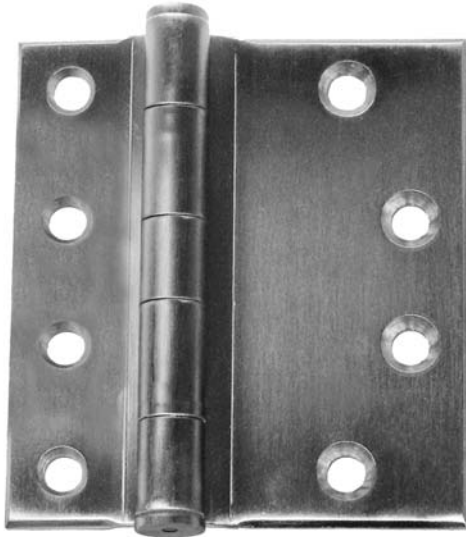


Heavy Weight Concealed Bearing **LifeSpan**[®]

- CB169** (ANSI A8311) Steel – polished and plated or phosphated and prime coated for painting
- CB109** (ANSI A2311) Brass or bronze – polished and plated or painted
- CB109 (32)** (ANSI A5311) Stainless steel – highly polished
- CB109 (32D)** (ANSI A5311) Stainless steel – satin finish

- For heavy or high frequency mineral core or wood doors with edge rails that won't hold screws, hung on channel iron frames
- Heavy weight gauges increase available bearing surface area for maximum friction reduction
- Concealed LifeSpan[®] bearing is maintenance free – no oil, no grease
- Pins in non-ferrous hinges are stainless steel
- Reversible flush tips and pins
- Hinges can be furnished with hospital tips (HT)
- Consider using a back plate with these hinges
- LifeSpan[®] limited lifetime warranty
- Available with an inline hole pattern for tubular doors
- Packed with machine screws and grommet nuts for 1 3/4" doors



Measurements below

Size Length of Joint	Width		Offset		Gauge of Metal	Flat Head Machine Screws/Per Piece		Quantity Per Box	Quantity Per Case	Case Weight	
	Frame Leaf (A)	Door Leaf (B)	Door Leaf (C)	Frame Leaf (D)		Frame Leaf	Door Leaf			Bronze Lbs. (Kg)	Steel Lbs. (Kg)
4 1/2 (114)	1 1/2 (38.1)	2 9/16 (65)	5/8 (15.9)	1/2 (12.7)	.180 (4.6)	3-12-24 X 1/2	3-1/4 -20 X 2	3 EA.	30 EA.	56 (26)	44 (20)
5 (127)	1 1/2 (38.1)	2 7/8 (73)	5/8 (15.9)	1/2 (12.7)	.190 (4.8)	4-12-24 X 1/2	4-1/4 -20 X 2	3 EA.	24 EA.	57 (26)	51 (23)
6 (152)	1 1/2 (38.1)	3 1/4 (82.6)	5/8 (15.9)	1/2 (12.7)	.203 (5.2)	4-1/4-20 X 1/2	5-1/4 -20 X 2	3 EA.	24 EA.	80 (36)	74 (34)