

5 KNUCKLE FULL SURFACE HINGES

Standard Weight Concealed Bearing **LifeSpan**[®]

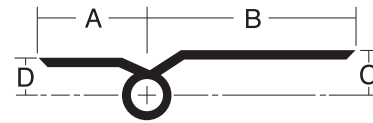
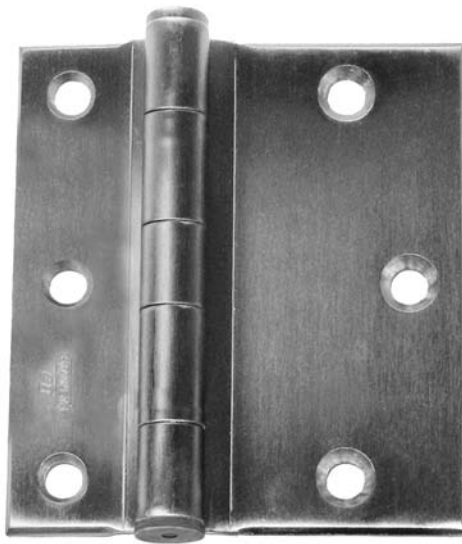
CB171 (ANSI A8312) Steel – polished and plated or phosphated and prime coated for painting

CB110 (ANSI A2312) Brass or bronze – polished and plated or painted

CB110 (32) (ANSI A5312) Stainless steel – highly polished

CB110 (32D) (ANSI A5312) Stainless steel – satin finish

- For medium weight kalamein, mineral core, or wood doors with edge rails that won't hold screws of average frequency hung on channel iron frames
- Concealed LifeSpan[®] bearing is maintenance free – no oil, no grease
- Pins in non-ferrous hinges are stainless steel
- Reversible flush tips and pins
- Hinges can be furnished with hospital tips (HT)
- Consider using a back plate with these hinges
- LifeSpan[®] limited lifetime warranty
- Packed with machine screws and grommet nuts for 1 3/4" doors



Measurements below

| Size Length of Joint | Width | | Offset | | Gauge of Metal | Flat Head Machine Screws/Per Piece | | Quantity Per Box | Quantity Per Case | Case Weight | |
|-------------------------|-------------------|------------------|------------------|-------------------|-------------------|---------------------------------------|--------------|---------------------|----------------------|---------------------|--------------------|
| | Frame Leaf (A) | Door Leaf (B) | Door Leaf (C) | Frame Leaf (D) | | Frame Leaf | Door Leaf | | | Bronze Lbs. (Kg) | Steel Lbs. (Kg) |
| 4 1/2 (114) | 1 1/2 (38.1) | 2 9/16 (65) | 9/16 (14.3) | 7/16 (11.1) | .134 (3.4) | 3-12-24 X 1/2 | 3-1/4-20 X 2 | 3 EA. | 30 EA. | 40 (18) | 38 (17) |
| 5 (127) | 1 1/2 (38.1) | 2 7/8 (73) | 9/16 (14.3) | 7/16 (11.1) | .146 (3.7) | 4-12-24 X 1/2 | 4-1/4-20 X 2 | 3 EA. | 24 EA. | 43 (20) | 39 (18) |