

3 KNUCKLE FULL SURFACE HINGES

Standard Weight Concealed Bearing **LifeSpan**[®]

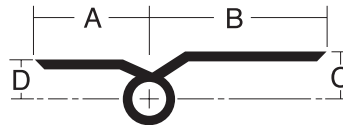
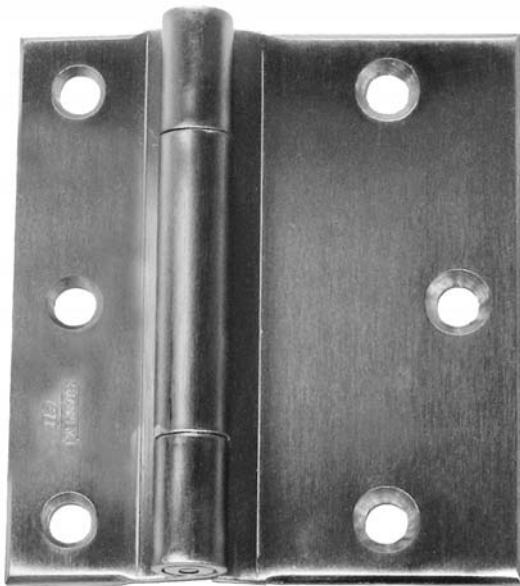
CB1930R – (ANSI A8312) Steel – polished and plated or phosphated and prime coated for painting

CB1990R – (ANSI A2312) Brass or bronze – polished and plated or painted

CB1990R (32) – (ANSI A5312) Stainless steel – highly polished

CB1990R (32D) – (ANSI A5312) Stainless steel – satin finish

- For medium weight mineral core, kalamein, or wood doors of average frequency, hung on channel iron frames
- Concealed LifeSpan[®] bearing for trouble-free, long life – no oil, no grease, no maintenance
- Pins in nonferrous hinges are stainless steel
- Reversible flush tips and pins
- Hinges can be furnished with hospital tips (HT)
- Consider using a back plate with these hinges
- LifeSpan[®] limited lifetime warranty
- Available with exposed tips (ET)
- Packed with machine screws and grommet nuts for 1 3/4" doors



Measurements below

Size Length of Joint	Width		Offset		Gauge of Metal	Flat head machine Screws/Per Piece		Quantity Per Box	Quantity Per Case	Case Weight	
	Frame Leaf (A)	Door Leaf (B)	Door Leaf (C)	Frame Leaf (D)		Frame Leaf	Door Leaf			Bronze Lbs. (Kg)	Steel Lbs. (Kg)
4 1/2 (114)	1 1/2 (38.1)	2 9/16 (65)	9/16 (14.3)	7/16 (11.1)	.134 (3.4)	3-12-24 X 1/2	3-1/4-20 X 2	3 EA.	30 EA.	40 (18)	38 (17)
5 (127)	1 1/2 (38.1)	2 7/8 (73)	9/16 (14.3)	7/16 (11.1)	.146 (3.7)	4-12-24 X 1/2	4-1/4-20 X 2	3 EA.	24 EA.	43 (20)	39 (18)