

**Heavy Weight Concealed Bearings "Swing Clear"**



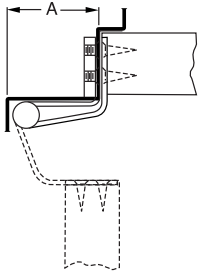
**CB268** – (ANSI A8121)  
**CB278†** – (ANSI A8121)  
**CB269** – (ANSI A8421)  
**CB264** – (ANSI A8221)  
**CB274†** – (ANSI A8221)  
**CB266** – (ANSI A8321)

Steel –  
 polished and plated or  
 phosphated and prime  
 coated for painting

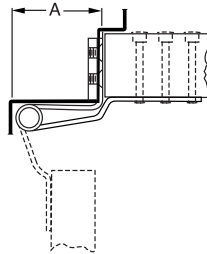
**STSCB268** – (ANSI A5121)  
**STSCB278†** – (ANSI A5121)  
**STSCB269** – (ANSI A5421)  
**STSCB264** – (ANSI A5221)  
**STSCB274†** – (ANSI A5221)  
**STSCB266** – (ANSI A5321)

Stainless Steel –  
 highly polished  
 or satin finish

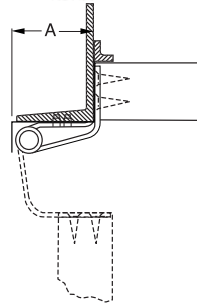
- For corridor doors to patient's rooms, operating rooms, emergency rooms or wherever conditions require a completely clear opening
- Designed to swing door in hospitals, institutions or public buildings completely clear of the opening when door is opened 95°
- Consult factory for hinges available to clear 90°
- Concealed LifeSpan® bearing is maintenance free – no oil, no grease
- Pins in nonferrous hinges are stainless steel
- Hinges can be furnished with hospital tips (HT)
- Full surface and half surface hinges packed with flat head machine screws and grommet nuts for door leaf, specify door thickness if other than 1 3/4"
- Consider using a back plate with full surface and half surface hinges
- For half mortise and full surface hinges to fit narrow metal frames, consult factory
- LifeSpan® limited lifetime warranty
- Reversible flush tips and pins



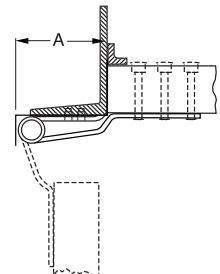
**Full Mortise**  
**CB268 and STSCB268**  
 {For square edge doors} (shown)



**Half Surface**  
**CB269 and STSCB269**



**Half Mortise**  
 For channel iron frames  
**CB264 and STSCB264**  
 {For square edge doors} (shown)



**Full Surface**  
 For channel iron frames  
**CB266 and STSCB266**

**CB278† and STSCB278†**  
 {For doors beveled 1/8" in 2" (3.2 in 51mm)}

**CB274† and STSCB274†**  
 {For doors beveled 1/8" in 2" (3.2 in 51mm)}

Class Number	Size Length of Joint		Minimum Clearance Required Dimensions "A"		Gauge of Metal		Flat Head Screws/ Per Piece		Quantity Per Box	Quantity Per Case	Case Weight
	inches	(mm)	inches	(mm)	inches	(mm)	Frame Leaf-Machine	Door Leaf-Wood			
<b>CB268, STSCB268</b>	4 1/2	(114)	2 1/8	(54)	.180	(4.6)	4-12-24 X 1/2	4-12 X 1 1/4 W.S	3 EA.	15 EA.	31 (14)
<b>CB268, STSCB268</b>	5	(127)	2 1/8	(54)	.190	(4.8)	4-12-24 X 1/2	4-12 X 1 1/4 W.S	3 EA.	15 EA.	35 (16)
<b>CB278†, STSCB278†</b>	4 1/2	(114)	2 1/8	(54)	.190	(4.8)	4-12-24 X 1/2	4-12 X 1 1/4 W.S	3 EA.	15 EA.	31 (14)
<b>CB278†, STSCB278†</b>	5	(127)	2 1/8	(54)	.190	(4.8)	4-12-24 X 1/2	4-12 X 1 1/4 W.S	3 EA.	15 EA.	35 (16)
<b>CB269, STSCB269</b>	5	(127)	2 1/8	(54)	.190	(4.8)	4-12-24 X 1/2	5-1/4-20 X 1 1/4 M.S.*	....	3 EA.	9 (4)
<b>CB264, STSCB264</b>	5	(127)	2 1/8	(54)	.190	(4.8)	4-12-24 X 1/2	4-12 X 1 1/4 W.S	3 EA.	15 EA.	35 (16)
<b>CB274†, STSCB274</b>	5	(127)	2 1/8	(54)	.190	(4.8)	4-12-24 X 1/2	4-12 X 1 1/4 W.S	3 EA.	15 EA.	35 (16)
<b>CB266, STSCB266</b>	5	(127)	2 1/8	(54)	.190	(4.8)	4-12-24 X 1/2	5-1/4-20 X 1 1/4 M.S.*	3 EA.	15 EA.	35 (16)

\* Furnished with through-bolts and grommet nuts.

† For doors beveled 1/8" IN 2" (3.2MM IN 51 MM) on hinge side.

For frame and door leaf dimensions refer to template furnished on request. If door closers, friction or overhead door holders are to be used in conjunction with these hinges, consult manufacturer of the device to be used for application details