

## 5 KNUCKLE SWING CLEAR HINGES

### Heavy Weight Ball Bearing "Swing Clear"



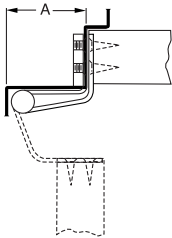
**FBB268** – (ANSI A8121)  
**FBB278†** – (ANSI A8121)  
**FBB269** – (ANSI A8421)  
**FBB264** – (ANSI A8221)  
**FBB274†** – (ANSI A8221)  
**FBB266** – (ANSI A8321)

Steel –  
 polished and plated or  
 phosphated and prime  
 coated for painting

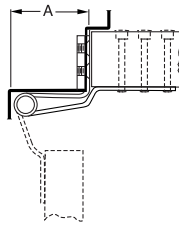
**STSFBB268** – (ANSI A5121)  
**STSFBB278†** – (ANSI A5121)  
**STSFBB269** – (ANSI A5421)  
**STSFBB264** – (ANSI A5221)  
**STSFBB274†** – (ANSI A5221)  
**STSFBB266** – (ANSI A5321)

Stainless Steel –  
 highly polished  
 or satin finish

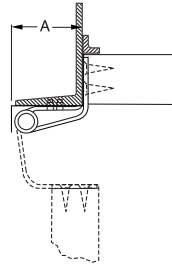
- For corridor doors to patients' rooms, operating rooms, emergency rooms, or wherever conditions require a completely clear opening in hospitals, institutions or public buildings
- Designed to swing door completely clear of the opening when door is opened 95°
- Consult factory for hinges available to clear 90°
- Equipped with four Stanley permanently lubricated non-detachable ball bearings
- Pins in nonferrous hinges are stainless steel
- Heavy weight gauges increase available bearing surface area for maximum friction reduction
- Hinges can be furnished with hospital tips
- Full surface and half surface hinges packed with flat head machine screws and grommet nuts for door leaf, specify door thickness if other than 1 3/4"
- Consider using a back plate on full surface and half surface hinges
- For half mortise and full surface hinges to fit narrow metal frames, consult factory
- Reversible flush tips and pins



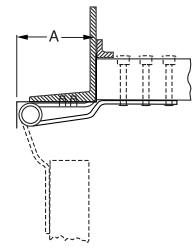
**Full Mortise - FBB268 and STSFBB268**  
 {For square edge doors} (shown)  
**FBB278† and STSFBB278†**  
 {For doors beveled 1/8" in 2" (3.2 in 51mm)}



**Half Surface**  
**FBB269**  
**and STSFBB269**



**Half Mortise**  
**For Channel Iron Frames**  
**FBB264 and STSFBB264**  
 {For square edge doors} (shown)  
**FBB274† and STSFBB274†**  
 {For doors beveled 1/8" in 2" (3.2 in 51mm)}



**Full Surface**  
**For Channel Iron Frames**  
**FBB266 and STSFBB266**

Class Number	Size Length of Joint		Minimum Clearance Required Dimensions "A"		Gauge of Metal		Flat Head Screws/ Per Piece		Quantity Per Box	Quantity Per Case	Case Weight	
	inches	(mm)	inches	(mm)	inches	(mm)	Frame Leaf-Machine	Door Leaf-Wood			Lbs.	(Kg)
<b>FBB268, STSFBB268</b>	4 1/2	(114)	2 1/8	(54)	.180	(4.6)	4-12-24 X 1/2	4-12 X 1 1/4 W.S	3 EA.	15 EA.	31	(14)
<b>FBB268, STSFBB268</b>	5	(127)	2 1/8	(54)	.190	(4.8)	4-12-24 X 1/2	4-12 X 1 1/4 W.S	3 EA.	15 EA.	35	(16)
<b>FBB278†, STSFBB278†</b>	4 1/2	(114)	2 1/8	(54)	.190	(4.8)	4-12-24 X 1/2	4-12 X 1 1/4 W.S	3 EA.	15 EA.	31	(14)
<b>FBB278†, STSFBB278†</b>	5	(127)	2 1/8	(54)	.190	(4.8)	4-12-24 X 1/2	4-12 X 1 1/4 W.S	3 EA.	15 EA.	35	(16)
<b>FBB269, STSFBB269</b>	5	(127)	2 1/8	(54)	.190	(4.8)	4-12-24 X 1/2	5-1/4-20 X 1 1/4 M.S.*	....	3 EA.	9	(4)
<b>FBB264, STSFBB264</b>	5	(127)	2 1/8	(54)	.190	(4.8)	4-12-24 X 1/2	4-12 X 1 1/4 W.S	3 EA.	15 EA.	35	(16)
<b>FBB274† STSFBB274</b>	5	(127)	2 1/8	(54)	.190	(4.8)	4-12-24 X 1/2	4-12 X 1 1/4 W.S	3 EA.	15 EA.	35	(16)
<b>FBB266, STSFBB266</b>	5	(127)	2 1/8	(54)	.190	(4.8)	4-12-24 X 1/2	5-1/4-20 X 1 1/4 M.S.*	3 EA.	15 EA.	35	(16)

\* Furnished with through-bolts and grommet nuts.

† For doors beveled 1/8" IN 2" (3.2MM IN 51 MM) on hinge side.

For frame and door leaf dimensions refer to template furnished on request. If door closers, friction or overhead door holders are to be used in conjunction with these hinges, consult manufacturer of the device to be used for application details