

ARCHITECTURAL STEEL AND STAINLESS STEEL BARREL TYPE CONTINUOUS HINGES

Half Mortise Swing Clear with Half-Wrap Edge Guard **LifeSpan**[®]

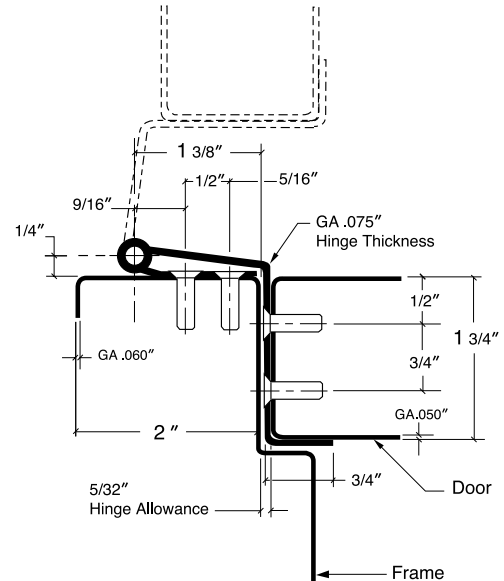
646 – Standard duty steel

656 – Standard duty stainless steel

- To meet ADA requirements for barrier-free clearance in a 32" opening, the pivot point of the hinge is located on the face of the frame, allowing the door to swing out of the opening to provide clear passage by wheel chairs and other equipment
- Distributes door weight and stress along the full length of door and frame
- No misaligned pivot points of individual hinges
- Conforms to ANSI/BHMA Standard A156.26-1996, Grade 1
- Edge guard protects the inside edge of door, which is most exposed to damage when open
- Fire rated for up to and including 3 hours
- LifeSpan[®] hinge covered by a limited lifetime warranty for the life of the building
- Steel hinges are prime coated for painting. For other powder coated finishes consult factory
- Stainless steel is available in (32) highly polished, and (32D) satin finish. For special powder coated finishes consult factory
- 1/4" diameter teflon coated pin
- Superior bearing design inhibits dirt collection
- Two stainless steel bearings, top and bottom, prevent door sagging if nylon bearings degrade during a fire

Hinges can be furnished as follows:

- with hospital tips (HT)
- with dutch door prep
- custom length



Length		Finish		Number of #10 x 1/2" Self Drilling Screws Per Hinge	Number of #10 x 1" Wood Screws Per Hinge	Quantity Per Carton	Carton Weight	
Feet	(mm)	646	656				Lbs.	(KG)
6' 8"	(2032)	P	32D	40	20	1	17	(7.7)
7' 0"	(2134)	P	32D	42	21	1	17	(7.7)
7' 2"	(2184)	P	32D	42	21	1	17	(7.7)
8' 0"	(2286)	P	32D	46	23	1	20	(9.1)
10' 0"	(3048)	P	32D	54	27	1	26	(11.8)

Machine screws available separately